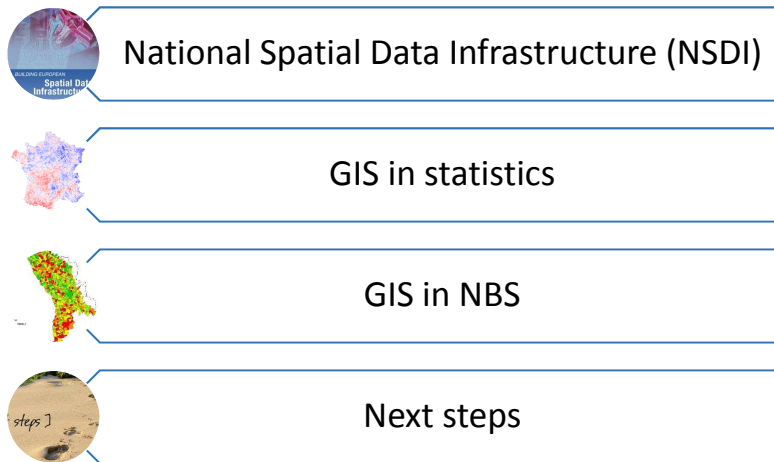


Use of GIS technologies in statistics

3rd International Workshop on Operationalizing the Integrated Geospatial Information Framework, 26-29 October 2019, Minsk, Belarus

Introduction



3rd International Workshop on Operationalizing the Integrated Geospatial Information Framework, 26-29 October 2019, Minsk, Belarus

National Spatial Data Infrastructure



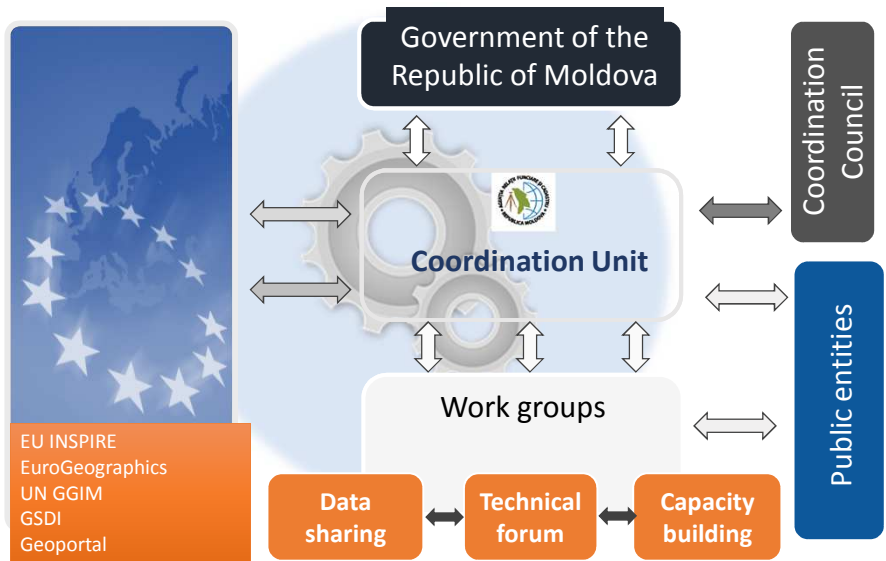
Law no. 254 regarding NSDI was approved by Parliament on 17.11.2016

Aligned to European Directive INSPIRE

Regulates the responsibilities for data producers, contents of metadata, data sharing, etc.

3rd International Workshop on Operationalizing the Integrated Geospatial Information Framework, 26-29 October 2019, Minsk, Belarus

NSDI - organisation



3rd International Workshop on Operationalizing the Integrated Geospatial Information Framework, 26-29 October 2019, Minsk, Belarus

Access to the spatial data

Before 2014

- Maps on paper
- Shapefiles - hard copy on request
- With payment

2014

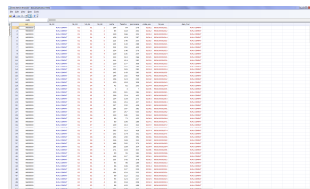
After 2014

- Reference geodetic maps – WMS, WMTS
- Cadastral data – hard copy on request, in the future – WMS
- Free of charge

GIS in statistics – introduction



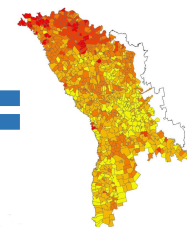
Reference geodetic maps

Statistical data



Information technologies

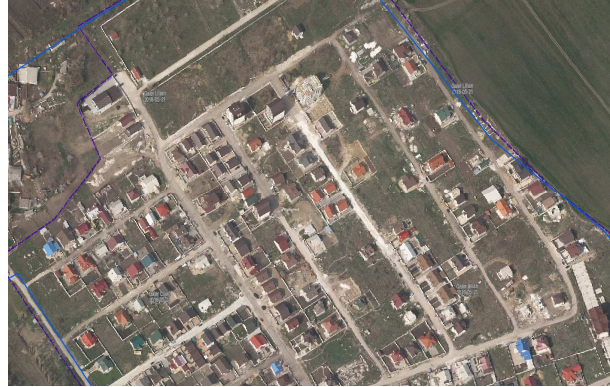


Computer visualization of spatial databases

GIS in statistics – changes



2007



2016

3rd International Workshop on Operationalizing the Integrated Geospatial Information Framework, 26-29 October 2019, Minsk, Belarus

7

GIS in statistics - resources



Software – 1 ArcGIS for Server 10.4.1 license and ArcGIS for Desktop 10.4.1 standard license



Hardware – ArcGIS installed on 4 desktops. Needs – two at least 19" screens for each workstation



Human Resources – at the moment 2 GIS specialists



In the organizational structure – GIS Unit under Statistical Methods Division

3rd International Workshop on Operationalizing the Integrated Geospatial Information Framework, 26-29 October 2019, Minsk, Belarus

8

GIS in statistics

Production

Quality checks
in Census

Data
collection

Data analysis

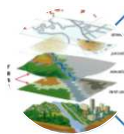
Dissemination (Census data):

At the raion
level

At the
commune level

At the locality
level

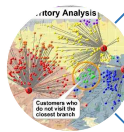
GIS in statistics - production



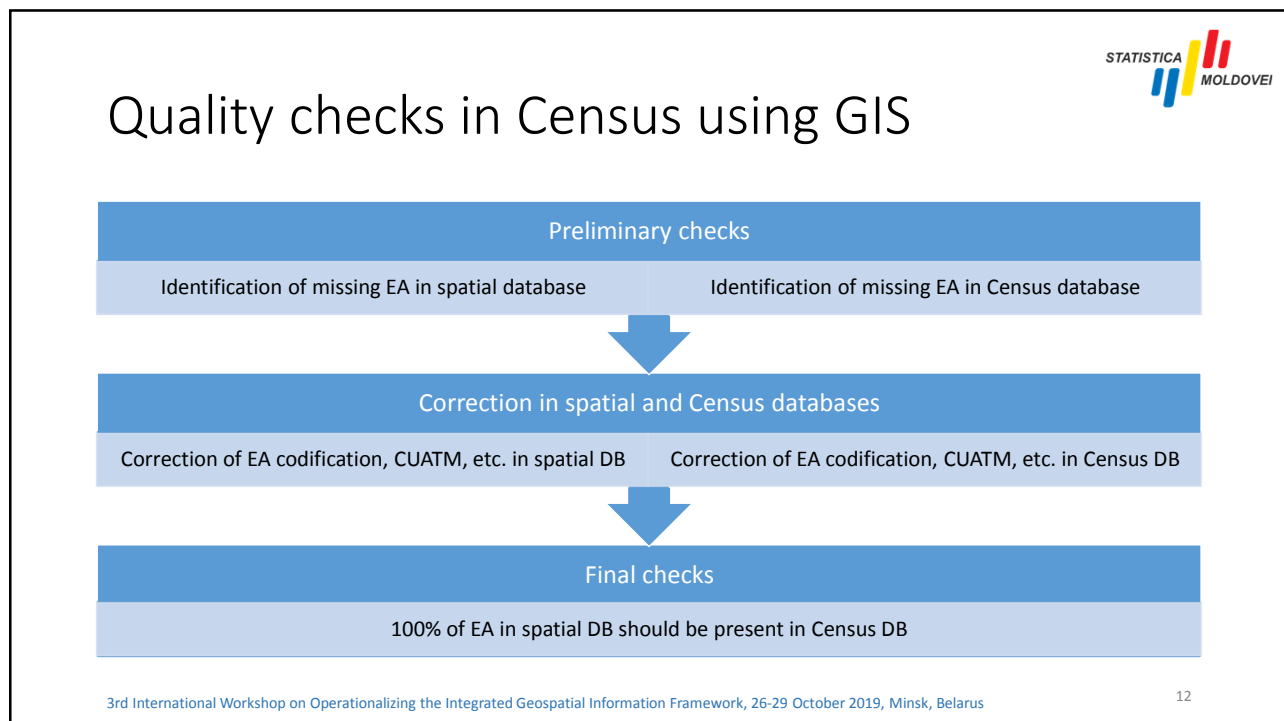
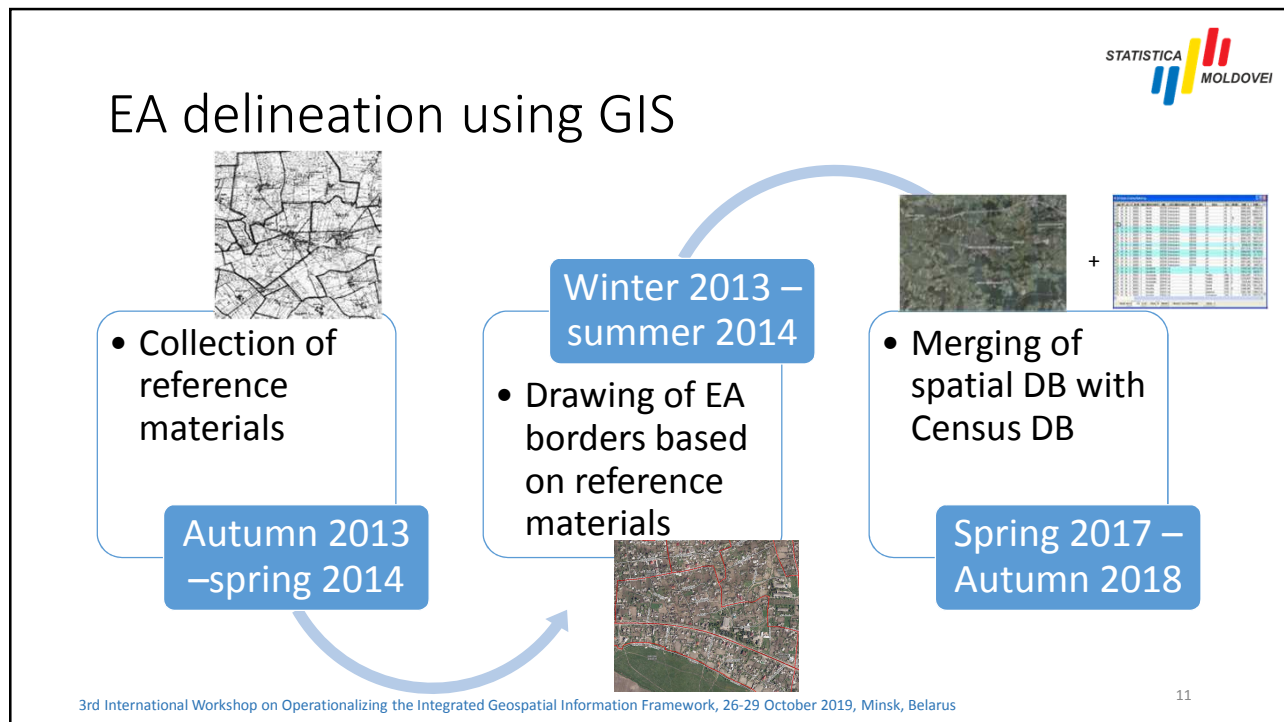
Quality check in Census



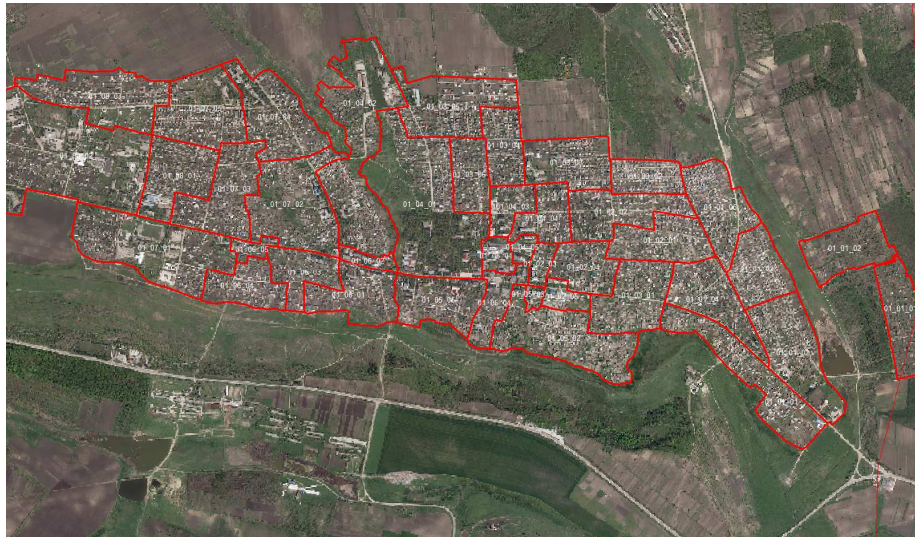
Data collection



Data analysis



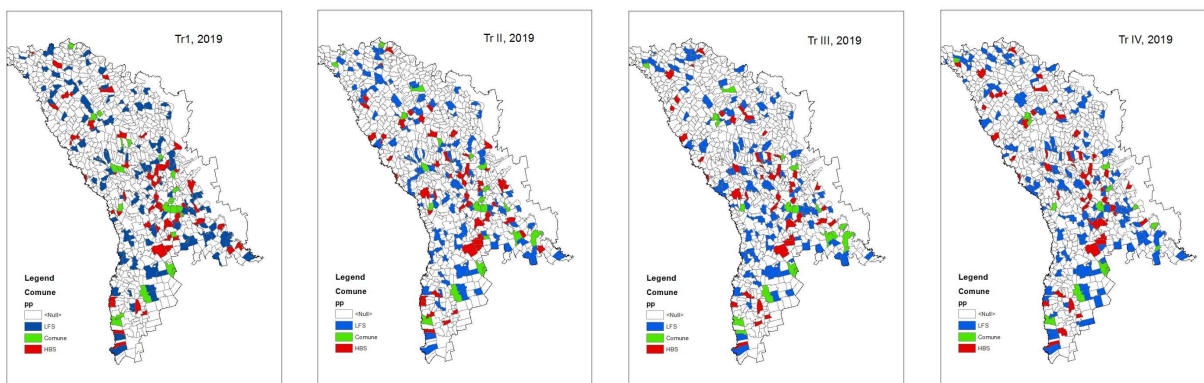
Master Sample Frame



3rd International Workshop on Operationalizing the Integrated Geospatial Information Framework, 26-29 October 2019, Minsk, Belarus

13

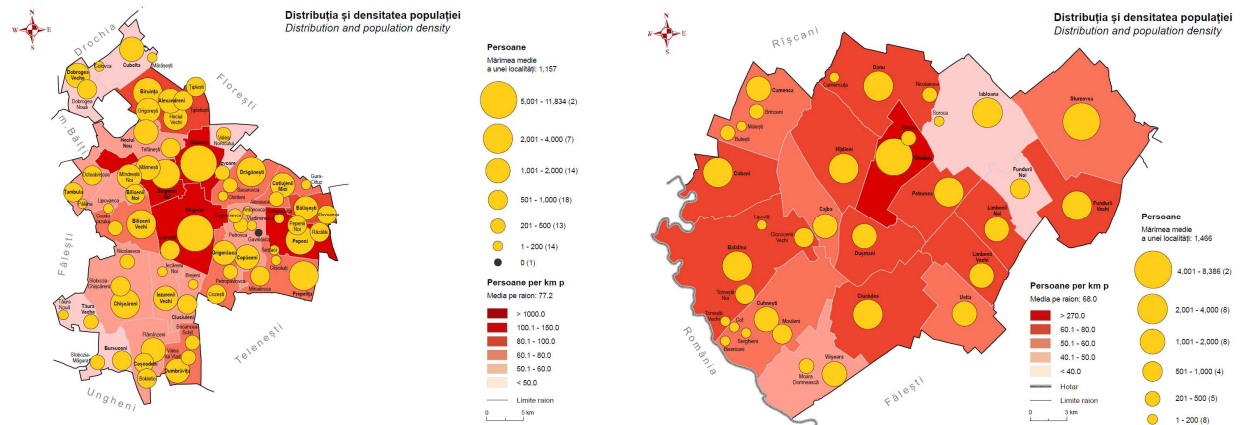
Support to sampling activities – visualization of the sample



3rd International Workshop on Operationalizing the Integrated Geospatial Information Framework, 26-29 October 2019, Minsk, Belarus

14

GIS in statistics – dissemination (summer 2017)



3rd International Workshop on Operationalizing the Integrated Geospatial Information Framework, 26-29 October 2019, Minsk, Belarus

17

Data collection at the address points level

September – December 2019 – testing of data collection at the level of address points

70 fieldworkers, 7 supervisors and 2 coordinators

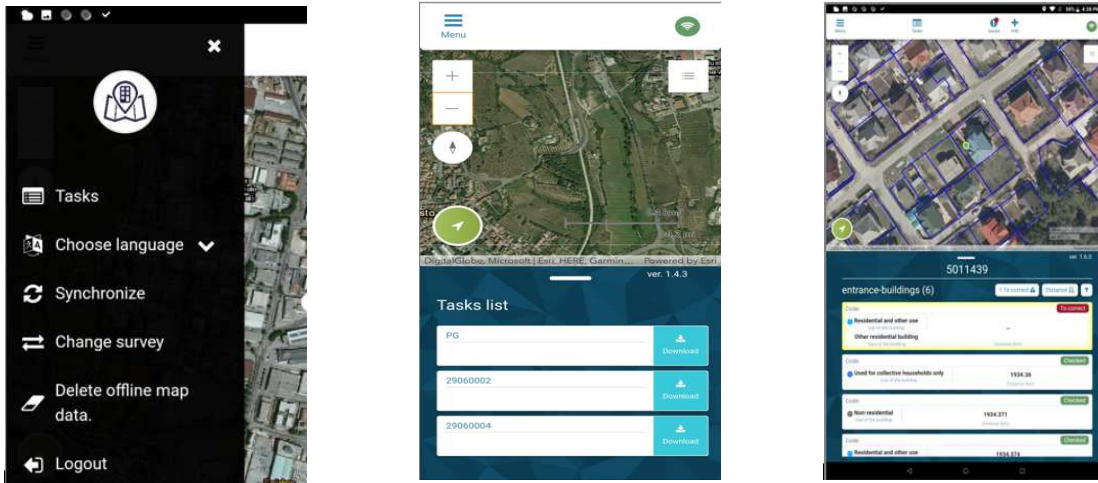
Data about all buildings and dwellings in 202 PSUs

- Building type
- Use of the building
- Address
- X,Y coordinates
- Occupational status of the dwellings

3rd International Workshop on Operationalizing the Integrated Geospatial Information Framework, 26-29 October 2019, Minsk, Belarus

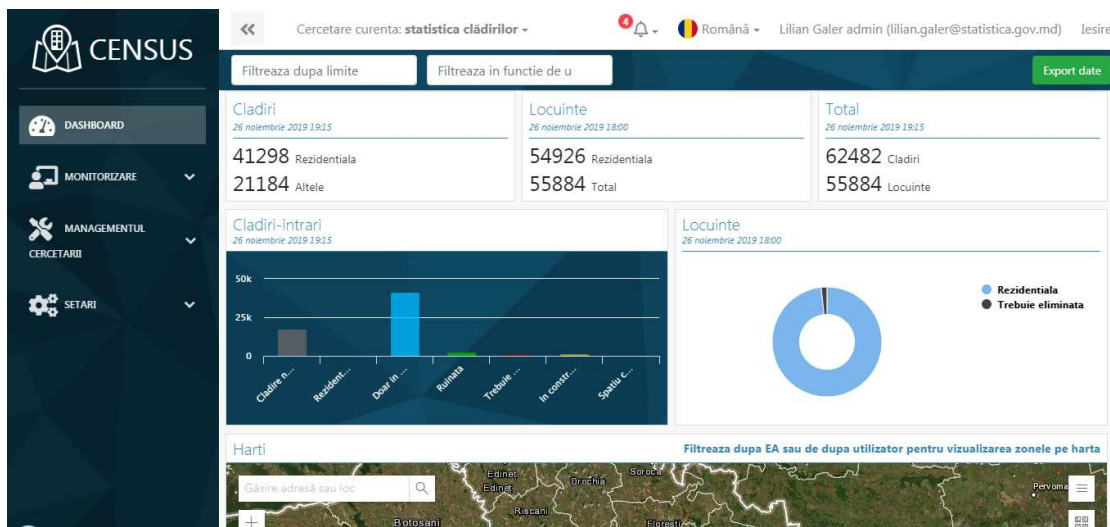
18

Data collection – mobile app Census Fieldwork



3rd International Workshop on Operationalizing the Integrated Geospatial Information Framework, 26-29 October 2019, Minsk, Belarus

Data collection - Dashboard



3rd International Workshop on Operationalizing the Integrated Geospatial Information Framework, 26-29 October 2019, Minsk, Belarus

Data collection – results at 26.11.2019

- 62482 buildings collected 55884 dwellings



Cladiri-intrari □ ×

COD: 71019fc9-8a6d-4a35-a7b9-27b45cf46930

UTILIZAREA CLADIRII: Doar in scop rezidential, TIPUL CLADIRII: Casa individuala, EXISTENTA DENUMIRII STRAZII: No, EXISTENTA NUMARULUI CLADIRII: No, EXISTENTA BAREI: No, NUMARUL SCARII: 0, POZITIA DE DETECTARE: 47.769950380860735, 27.46284967117129

CHILD TABULAR LAYERS: dwellings (1)

ULTIMA ACTUALIZARE: 13 noiembrie 2019 18:25
ULTIMUL UTILIZATOR ACTUALIZARE: Lia Poting

[+ Adaugati subiectul](#)

🔍 Transfocare la



3rd International Workshop on Operationalizing the Integrated Geospatial Information Framework, 26-29 October 2019, Minsk, Belarus

21

Next steps

- Creation of a statistical Building and Dwelling Register
- Preparation for the PHC 2020 round (EAs/statistical units delineation)
- Collecting data using GIS technologies
- Monitoring of data collection
- Geocoding of Business Register
- Production of SDG indicators
- Dissemination of the PHC at the level of grids
- Building of a statistical geoportal

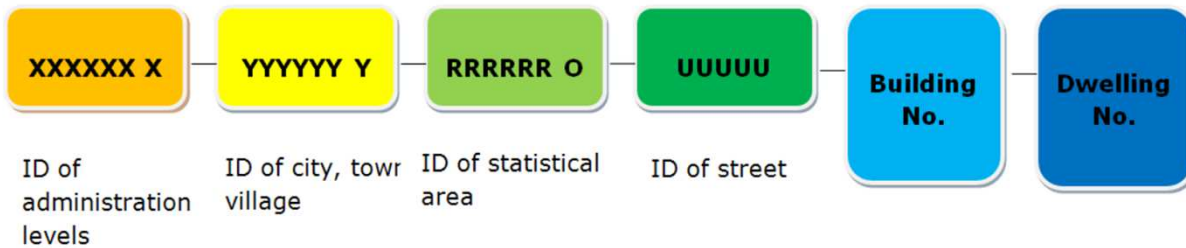
3rd International Workshop on Operationalizing the Integrated Geospatial Information Framework, 26-29 October 2019, Minsk, Belarus

22

Next steps – creation of Buildings and dwellings register



Coding of the data at the level of address point



Next steps – data collection and monitoring



Enumerator tracking

Idp.	Miejscowość	Ulica	Nr domu	Nr lokalu	Zadanie	Wynik
1	Kanierki	Brozowa	3	2	Planowane	Do spisu

data	id	id	id	id	id	id	id	id	id
2010-03-21 10:32:57.0	154025.33	154013.33	154013.33	154013.33	154013.33	154013.33	154013.33	154013.33	154013.33
2010-03-21 10:31:49.0	154017.33	154013.33	154013.33	154013.33	154013.33	154013.33	154013.33	154013.33	154013.33
2010-03-21 10:31:11.0	154011.33	154013.33	154013.33	154013.33	154013.33	154013.33	154013.33	154013.33	154013.33
2010-03-21 10:30:50.0	154002.33	154013.33	154013.33	154013.33	154013.33	154013.33	154013.33	154013.33	154013.33
2010-03-21 10:30:09.0	154792.37	154013.33	154013.33	154013.33	154013.33	154013.33	154013.33	154013.33	154013.33
2010-03-21 10:29:50.0	154794.31	154013.33	154013.33	154013.33	154013.33	154013.33	154013.33	154013.33	154013.33
2010-03-21 10:28:40.0	154794.36	154013.33	154013.33	154013.33	154013.33	154013.33	154013.33	154013.33	154013.33
2010-03-21 10:27:50.0	154794.36	154013.33	154013.33	154013.33	154013.33	154013.33	154013.33	154013.33	154013.33
2010-03-21 10:27:00.0	154794.36	154013.33	154013.33	154013.33	154013.33	154013.33	154013.33	154013.33	154013.33
2010-03-21 10:26:57.0	154794.37	154013.33	154013.33	154013.33	154013.33	154013.33	154013.33	154013.33	154013.33
2010-03-21 10:26:50.0	154794.36	154013.33	154013.33	154013.33	154013.33	154013.33	154013.33	154013.33	154013.33
2010-03-21 10:26:41.0	154794.36	154013.33	154013.33	154013.33	154013.33	154013.33	154013.33	154013.33	154013.33
2010-03-21 10:26:11.0	154794.36	154013.33	154013.33	154013.33	154013.33	154013.33	154013.33	154013.33	154013.33
2010-03-21 10:26:02.0	154794.36	154013.33	154013.33	154013.33	154013.33	154013.33	154013.33	154013.33	154013.33
2010-03-21 10:25:52.0	154794.36	154013.33	154013.33	154013.33	154013.33	154013.33	154013.33	154013.33	154013.33
2010-03-21 10:25:49.0	154794.36	154013.33	154013.33	154013.33	154013.33	154013.33	154013.33	154013.33	154013.33
2010-03-21 10:25:33.0	154694.11	154013.33	154013.33	154013.33	154013.33	154013.33	154013.33	154013.33	154013.33
2010-03-21 10:25:21.0	154697.11	154013.33	154013.33	154013.33	154013.33	154013.33	154013.33	154013.33	154013.33
2010-03-21 10:25:20.0	154694.11	154013.33	154013.33	154013.33	154013.33	154013.33	154013.33	154013.33	154013.33
2010-03-21 10:25:07.0	154692.11	154013.33	154013.33	154013.33	154013.33	154013.33	154013.33	154013.33	154013.33
2010-03-21 10:25:05.0	154694.11	154013.33	154013.33	154013.33	154013.33	154013.33	154013.33	154013.33	154013.33
2010-03-21 10:24:58.0	154697.11	154013.33	154013.33	154013.33	154013.33	154013.33	154013.33	154013.33	154013.33

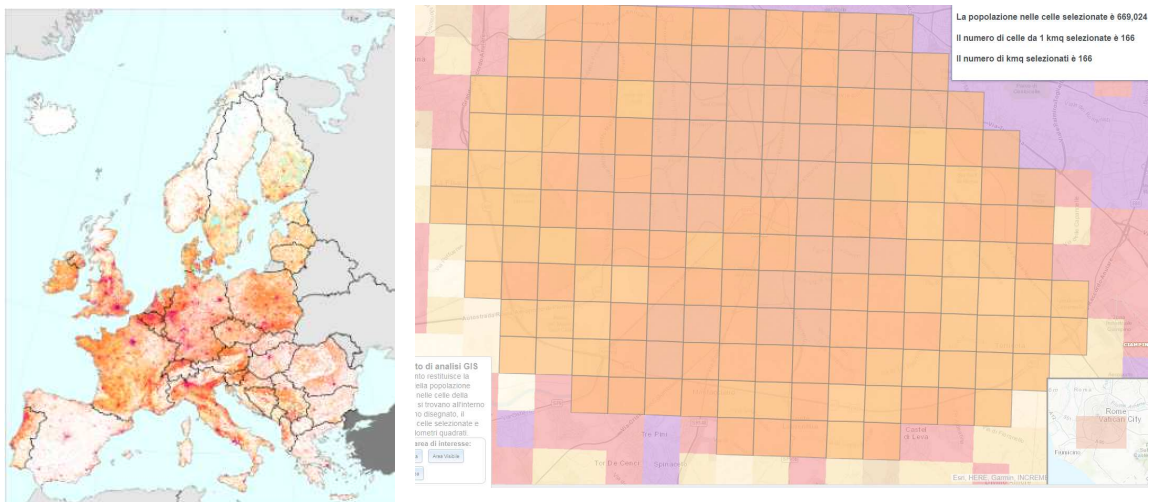
Next steps – SDG indicators

The possibility to calculate the SDG indicators:

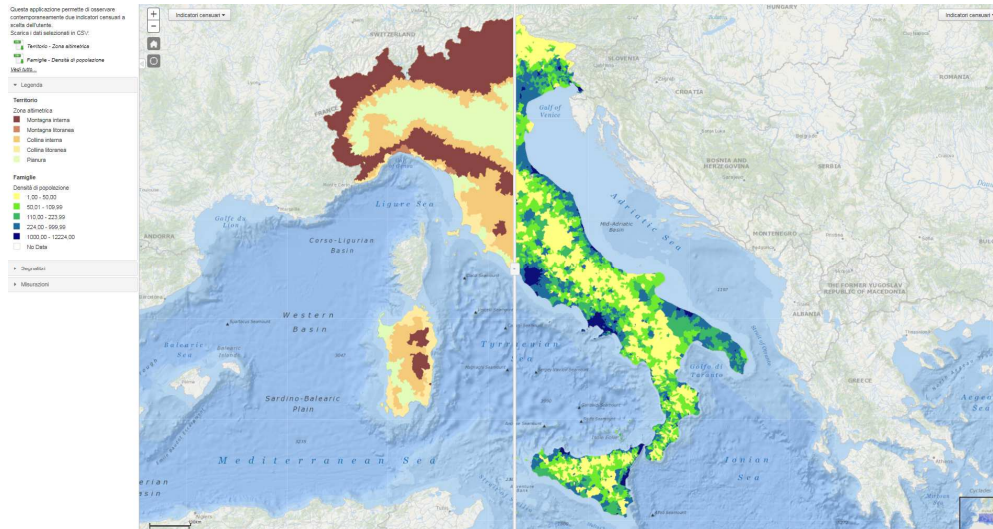
- SDG indicator 11.2.1: Proportion of population that has convenient access to public transport, by sex, age and persons with disabilities
- SDG indicator 11.3.1 Ratio of population growth rate to land consumption rate
- SDG 11.7.1 Average share of the built-up area of cities that is open space for public use for all, by sex, age and persons with disabilities

Better monitoring of SDG indicators on territorial breakdowns and over time

Next steps – dissemination of grids



Next steps – building of a statistical geoportal



3rd International Workshop on Operationalizing the Integrated Geospatial Information Framework, 26-29 October 2019, Minsk, Belarus

27

Challenges

Issues related to data disclosure control

Availability of detailed statistical data

Sometime different classifications are used by the owner of spatial data

Insufficient human resources

Insufficient capacities/knowledge

Lack of powerful workstations

Quite high costs at the beginning

3rd International Workshop on Operationalizing the Integrated Geospatial Information Framework, 26-29 October 2019, Minsk, Belarus

28

Thank you!
Questions?

lilian.galer@statistica.gov.md